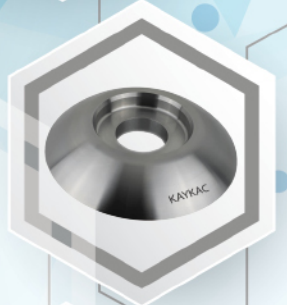
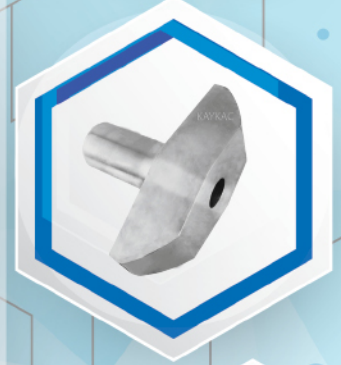
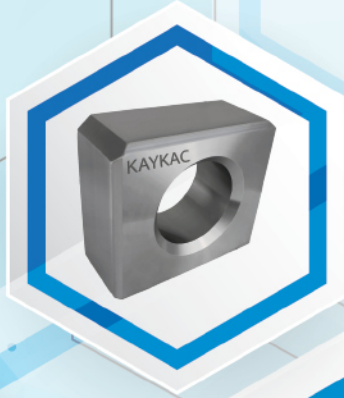




KAYKAÇ
M A K İ N E

VAGON YEDEK PARÇA ÜRETİMİNDE UZMAN
THE EXPERT WAGON SPARE PARTS MANUFACTURER





KAYKAÇ
M A K İ N E

HAKKIMIZDA

1982 yılında yönetim kurulu başkanımız Sn Hüseyin KAYKAÇ tarafından temelleri atılan KAYKAÇ MAKİNE, ağırlıklı olarak Demiryolu Sanayiine hizmet veren uzman bir yedek parça üreticisidir.

KAYKAÇ MAKİNE, teknik ve idari kadrosu ile bilişim ve imalat teknolojilerini yakından takip eden ve uygulayan, teknoloji ve kalite odaklı bir şirkettir. Günümüzde yerli ve yabancı birçok ana sanayi kuruluşunun ürünlerinde firmamız tarafından üretilen yedek parçalar kullanılmaktadır. Firmamızda müşterilerimizin talepleri doğrultusunda tasarım, ar-ge ve üretim faaliyetleri bir arada yürütülmektedir.

KAYKAÇ MAKİNE, güçlü altyapısı ve teknoloji odaklı üretim ve kontrol faaliyetleri ve uzman ve deneyimli kadrosu ile metal ve plastiğin şekillendirileceği tüm sektörlerde faaliyetlerini kalite odaklı yaklaşımından taviz vermeden sürdürmektedir.

KAYKAÇ MAKİNE, 2000 yılından bu yana lokomotif, yolcu ve yük vagonları için dövme, döküm, kaynaklı ve kauçuk-kompozit parçaların üretiminde uzmanlaşmış ve kendisini Demiryolu Sanayisine adanmıştır.

MİSYONUMUZ

- Kalite odaklı
- Çözüm odaklı
- Gelişim odaklı
- Alanında en iyisi olan ve bunu sahip olduğu belgelerle niteleyen

Beklentilerin üzerinde yaratıcı çözümler ve kalite sunarak demiryolu yedek parça sektöründe hizmet ve fark sağlamayı prensip edinmiş, ileri üretim tekniklerini kullanan güçlü bir yedek parça üreticisiyiz.

Misyonumuz, üzerimize düşen görevleri eksiksiz yerine getirerek müşterilerimizin kendi iş alanlarına odaklanmalarını sağlamaktır.

VİZYONUMUZ

- Demiryolu sektöründe müşteri odaklılık prensibi üzerinde çalışan,
- Çeyrek asırlık tecrübe ile sektörünü iyi tanıyan
- Yaratıcı ve teknik insan gücüne sahip
- Teknolojiyi iyi kullanan ve gelişmeleri takip eden
- Güvenilir

Dünya çapındaki demiryolu ana sanayi firmaları tarafından en çok tercih edilen global yedek parça üreticisi olmaktadır.

ABOUT US

KAYKAÇ MAKİNE, the foundations of which were laid by our chairman of the board, Mr. Hüseyin KAYKAÇ in 1982, is an expert spare parts manufacturer that mainly serves the railway industry.

KAYKAÇ MAKİNE, with its technical and administrative staff, is a technology and quality-oriented company that closely follows and applies information and manufacturing technologies. Today, spare parts produced by our company are used in the products of many domestic and foreign main industrial companies.

In our company, design, R&D and production activities are carried out together in line with the demands of our customers.

KAYKAÇ MAKİNE continues its activities without compromising its quality-oriented approach in all sectors where metal and plastic will be shaped, with its strong infrastructure, technology-oriented production and control activities, and expert and experienced staff.

KAYKAÇ MAKİNE has been specialized in the production of forged, casting, welded and rubber-composite parts for locomotives, passenger and freight wagons since 2000 and has dedicated itself to the Railway Industry.

MISSION

- Quality oriented
- Solution oriented
- Development oriented
- Who is the best in his field and qualifies it with the documents he has

We are a strong spare part manufacturer that uses advanced production techniques and has adopted the principle of providing service and difference in the railway spare parts sector by offering creative solutions and quality beyond expectations.

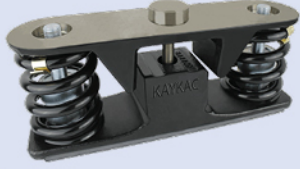
Our mission is to enable our customers to focus on their own business areas by fulfilling our duties completely.

VISION

- Working on the principle of customer focus in the railway sector,
- Knowing the industry well with a quarter century of experience
- Creative and technical manpower
- Using technology well and following developments
- Trustworthy

To be the most preferred global spare parts manufacturer by worldwide railway main industry companies.





KYK-200
YAN YASTIK KOMPLE
SIDE BEARER ASSEMBLY



KYK-201-1/2/3
ÜST OTURMA KAYMA PLAKASI
UPPER PART SLIDING PLATE
FAIGLE / RAILKO / KAYKAÇ



KYK-202
YAN YASTIK ALT OTURMA PARÇASI
SIDE BEARER LOWER PART



KYK-203
YAN YASTIK ÜST OTURMA PARÇASI
SIDE BEARER UPPER PART



KYK-204
YAN YASTIK YAYI
SIDE BEARER SPRING



KYK-205
TEKLİ SABO ÇARIĞI
SINGLE BRAKE BLOCK HOLDER



KYK-206
İKİLİ SABO ÇARIĞI
DOUBLE BRAKE BLOCK HOLDER



KYK-207-60
60 kN FREN MÜSELLESİ
60 kN BRAKE TRIANGLE



KYK-207-60-M
60 kN MÜSELLES ORTADAN BAĞALI
60 kN BRAKE TRIANGLE MIDDLE
CONNECTION



KYK-208
İKİLİ SABO ÇARIĞI
DOUBLE BRAKE BLOCK HOLDER



KYK-209
İKİLİ SABO ÇARIĞI
DOUBLE BRAKE BLOCK HOLDER



KYK-210
SUSTA ÇANAĞI
SPRING CUP



KYK-211
TEKLİ SABO KAMASI
SINGLE BRAKE PAD PIN



KYK-211-1
TEKLİ YUVALI SABO KAMASI
SINGLE BRAKE PAD PIN



KYK-212-3201 / 2501
3201 PİK SABO / 2501
IRON BRAKE BLOCK 3201 / 2501



KYK-213
İKİLİ SABO KAMASI
DOUBLE BRAKE BLOCK PIN



KYK-214-16 / 12
HALKA MENOT
SUSPENSION LINK
16 MM / 12 MM



KYK-215-250 / 240 / 225
ASKI BİYELİ
BRAKE BLOKE HANGER
250 MM / 240 MM / 225 MM



KYK-216
T-DURDURMA PARÇASI
T-BRAGA



KYK-217-300 / 360
FREN MANİVELASI
BRAKE LEVER
300 MM / 360 MM



KYK-218
FREN MANİVELA KÖPRÜSÜ
BRAKE LEVER CONNECTION LINK



KYK-219
EL FREN VOLANI
HANDRAD



KYK-220
GÖBEK PERNOSU
PIVOT PIN



KYK-221
SUSTA TAŞIYICI
WHEELSET GUIDING SYSTEM



KYK-222
SUSTA TAŞIYICI SENSÖRLÜ
WHEELSET GUIDING SYSTEM WITH SENSOR



KYK-223
GÖBEK ÇATALI
STIRRUP



KYK-224
GÖBEK YATAĞI
SWIVEL BEARING



KYK-225-182 / 386 / 381

**DİNGİL YATAĞI BA
BUATEGRES BA**

182 / 386 / 381



KYK-226

**ALT GÖBEK
PIVOT BEARING BOLSTER**



KYK-227

**ÇEKME ÇUBUĞU BAŞI
PULL HEAD**



KYK-228

**ÜST ÇANAK
CENTER PIVOT**



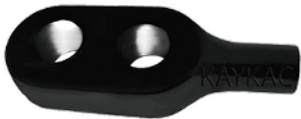
KYK-229

**FERİBOT KANCASI
CABLE HOOK**



KYK-230

**ÇEKME ÇUBUĞU BAŞI
PULL HEAD**



KYK-231

**ÇEKME ÇUBUĞU BAŞI
PULL HEAD**



KYK-232

**SUSTA SUPORTU
SPRING BRACKET**

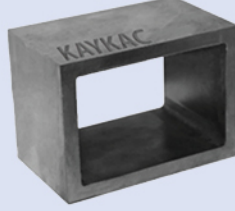


KYK-233

**120 kN FREN MÜSELLESİ
120 kN BRAKE TRIANGLE**



KYK-234-45 / 51
TURVON
TOURILLON
45 MM / 51 MM



KYK-235
SUSTA KASASI
SPRING BOX



KYK-236
GÖBEK AŞINMA ÇANAĞI
CENTRE PIVOT LINER



KYK-237
İÇ SUSTA YAYI
BOGIE INNER SPRING



KYK-238
DIŞ SUSTA YAYI
BOGIE OUTER SPRING



KYK-239
ÇATAL PERNOSU
STIRRUP PIN



KYK-240
BAKIR PERÇİN
COPPER RIVET



KYK-241
İTİCİ MİL
PUSH ROD



GÜNCEL ÜRÜN LİSTEMİZ İÇİN LÜTFEN
OKUTUNUZ.
PLEASE READ QR CODE FOR LATEST
PRODUCT LIST.



KYK-100-1,5 / 1 / 1,2

**CER PAKETİ
DRAW GEAR**

1500 kN / 1000 kN / 1200 kN



KYK-101-1,35 / 1 / 0,85

**VİDALI KOŞUM TAKIMI
SCREW COUPLER**

1350 kN / 1000 kN / 850 kN



KYK-102-1,35 / 1 / 0,85

**VİDALI KOŞUM TAKIMI
SCREW COUPLER**

1350 kN / 1000 kN



KYK-103-1,5 / 1 / 1,2

**CER KANCASI
DRAW HOOK**

1500 kN / 1000 kN / 1200 kN



KYK-104-1,5 / 1 / 1,2

**CER KANCASI
DRAW HOOK**

1500 kN / 1000 kN / 1200 kN



KYK-105

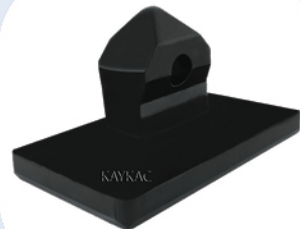
**KONTEYNER KİLİDİ t=25 MM
LOCKING PIN t=25 MM**



KYK-106-25 / 35

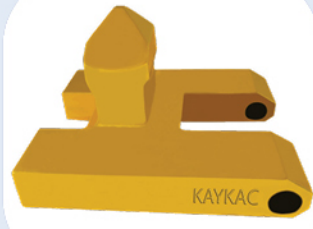
**KONTEYNER KİLİDİ
LOCKING PIN**

t=25 MM / t=35 MM



KYK-107-W

**KONTEYNER KİLİDİ SABİT TİP
LOCKING PIN FIXED**



KYK-108

**KONTEYNER KİLİDİ
LOCKING PIN**



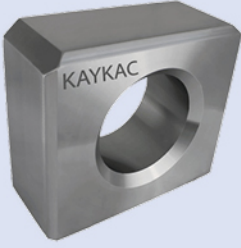
KYK-109
KONTEYNER KİLİDİ
LOCKING PIN



KYK-110-1 / 2
ORTA GÖBEK İNDÜKSİYONLU /
ORTA GÖBEK
MIDDLE JOINT HARDENED / MIDDLE JOINT



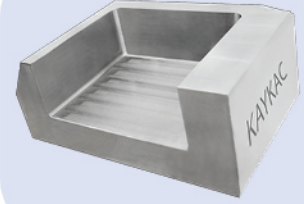
KYK-111
MERKEZLEME ÇEKİCİ
HAMMER



KYK-112
ORTA GÖBEK BAĞLANTI PARÇASI
LAGERSTEIN



KYK-113
BURÇ
BUSCHE



KYK-114-1 / 2 / 3 / 4
SAĞ / SOL YATAK
GELENKLÄGER RIGHT-LEFT
ST52-3 / ST52-3 / 4140 / 4140



KYK-115
TUTAMAK
HANDLE



KYK-116
TUTAMAK
HANDLE



KYK-117
TAMPON 105 MM 35 KJ
BUFFER 105 MM 35 KJ



KYK-118
BASAMAK
STEP



KYK-119
ÇERÇEVE
FRAME



KYK-120
VİDALI KONNEKTÖR
SCREW CONNECTOR



KYK-121-1 / 2
DAYAMA PARÇASI
TRACTION STOP
DÜZ TİP (STRAIGHT)



KYK-122
ORTA GÖBEK BAĞLANTISI
PLATE



KYK-123
BUHAR TAPASI
STEAM PLUG



KYK-124
YAFTA KAFESİ
LABEL PLATE



KYK-125
AÇIK KAPALI PLEYT
ON-OFF PLATE



KYK-126
TOPRAKLAMA KABLOSU
ROPE WITH LUGS



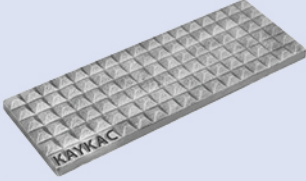
KYK-127
HAVA HORTUM REKORU
BRAKE AIR HOSE SLEEVE



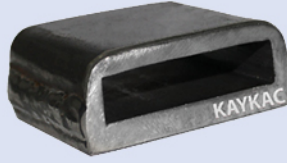
KYK-128
ZİNCİR
CHAIN



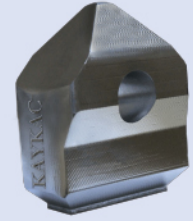
KYK-129
MANEVRACI TUTAMAĞI
MOVABLE HANDLE



KYK-130-1 / 2
KRİKO DESTEK PARÇASI
END LIFTING POINT
100X150 / 100X250



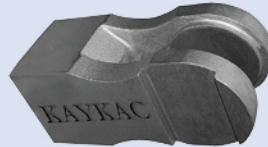
KYK-131
SİNYAL TUTUCU
SIGNAL STUTZE



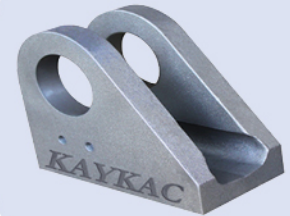
KYK-132
ISO KONTEYNER PİMİ
ISO SPIGOT



KYK-133
GÜVENLİK PİMİ
SECURITY PIN



KYK-134
DESTEK
SUPPORT



KYK-135
KULAK
BRACKET



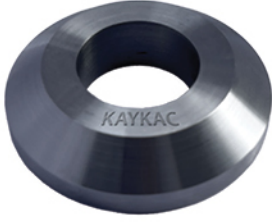
KYK-136
EL FREN SOMUNU
HAND BRAKE NUT



KYK-137
EL FREN MEKANİZMASI
HAND BRAKE MECHANISM



KYK-138
KANCA POLYAMİDİ
SLIDING PLATE



KYK-139
PUL
SCHEIBE



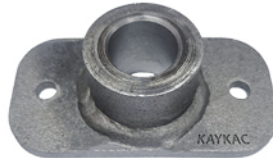
KYK-140
İKİLİ BASAMAK
STEP DOUBLE



KYK-141
AUTOM ETİKETİ
AUTOM LABEL



KYK-142
ÇEKME ÇUBUĞU MAFSALI
PULL JOINT



KYK-143
YATAK
BEARING



KYK-144
ETİKET SACI
LABEL SHEET



KYK-145
KONTEYNER KİLİDİ DÜZ
LOCKING PLATE MOVABLE



KYK-146
KONTEYNER KİLİDİ SABİT
LOCKING PIN FIXED



KYK-147
KAYMA PLAKASI
FRICTION PLATE



**GÜNCEL ÜRÜN LİSTEMİZ İÇİN LÜTFEN
OKUTUNUZ.**

**PLEASE READ QR CODE FOR LATEST
PRODUCT LIST.**



SVS X ASS

CERTIFICATE
Welding of railway vehicles and components according to EN 15085-2

This is to certify that **KAYKAÇ MAKİNA KİMYA İNŞAAT TARIMSAL SULAMA SİSTEMLERİ AMBALAJ MALZEMELERİ TAARHUT SANAYİ VE TİCARİET LIMITED ŞİRKETİ, Yeşiloba Mah. Ortadoğulski Sanayi Sitesi 46067 Sok. No:19 Seyhan / Adana / Turkey** is qualified to perform welding work within the range of certification of **Certification level CL1 according to EN 15085-2**

Field of application: - Production of railway vehicle components and bogie components (Without design and purchasing)

Range of certification

Welding process according to EN ISO 4853	Material group according to EN ISO/TR 15088	Dimensions	Comments
111	1.2012081+1	1+ 3 - 12 mm	300mm FV(ISO 15613)
135	1.2	1+ 1 - 6 mm	FV
	1.2	1+ 3 - 20 mm	BW
	1.2	1+ 25 - 50 mm	250mm 250M40545 (ISO 15613)

Responsible welding coordinator: Dipl.-Ing. Kismet BOZUGLU (IWE) [external] born: 13.01.1983

Deputy with equal rights: Gökhan AKDUMAN (Level C) born: 24.08.1992

Certificate no.: SVS15085/CL1/246/020

Valid: from 29.12.2019 to 28.12.2022

Issued on: 20.01.2020

Auditor: COCAN

General regulations (see annex)

TÜV AUSTRIA TÜRK

CERTIFICATE

The verification body of TÜV AUSTRIA TÜRK certifies that **Beyneşirine Kuruluşu TÜV AUSTRIA TÜRK KAYKAÇ MAKİNE SAN. TİC. LTD. ŞTİ** is qualified to perform welding work within the range of certification of **Certification level CL1 according to EN 15085-2**

Field of application: - Production of railway vehicle components and bogie components (Without design and purchasing)

Range of certification

Date of audit: 31.07.2019

Date of expiry: 04.08.2022

Certificate no.: CAS-19-PC-0092-TAT-0073

Certification body: TÜV AUSTRIA TÜRK

Responsible welding coordinator: Dipl.-Ing. Kismet BOZUGLU (IWE) [external] born: 13.01.1983

Deputy with equal rights: Gökhan AKDUMAN (Level C) born: 24.08.1992

Certificate no.: SVS15085/CL1/246/020

Valid: from 29.12.2019 to 28.12.2022

Issued on: 20.01.2020

Auditor: COCAN

General regulations (see annex)

TÜV AUSTRIA TÜRK

ROYALCERT INTERNATIONAL REGISTRARS

CERTIFICATE

RoyalCert International Registrars certifies that the management system of the organization has been assessed and found to be in accordance with the requirements of the related standard

ISO 9001:2015

KAYKAÇ MAKİNA VE KİMYA İNŞAAT TARIMSAL SULAMA SİSTEMLERİ AMBALAJ MALZEMELERİ TAARH. SAN.VE TİC.LTD.ŞTİ.

Yeşiloba Mah. Ortadoğulski San. Sit.46067 Sok. No:19 Seyhan / ADANA,TÜRKİYE

Scope: Machining, Steel construction, Railway Vehicle Transportation, Unloading, Slewing Units, Railcar and Locomotive Spare Parts Manufacturing and Sales Services

General Manager: [Signature]

TÜRK PATENT

ROYALCERT

CERTIFICATE

The verification body of TÜV AUSTRIA TÜRK certifies that **KAYKAÇ MAKİNE SAN. TİC. LTD. ŞTİ** is qualified to perform welding work within the range of certification of **Certification level CL 1 according to EN 15085-2**

Field of application: Production of railway vehicle parts (Design and purchasing not included)

Range of certification

Welding process according to EN ISO 4853	Material group according to EN ISO/TR 15088	Dimensions	Comments
111	0395/0+1 / 312081+2	1+ 3 - 12 mm	FW (EN ISO 15613)
135	250M40545	1+ 25 - 50 mm	BW (EN ISO 15613)
135	1.2	1+ 3 - 20 mm	BW (EN ISO 15614)
135	1.2	1+ 5 - 30 mm	FW (EN ISO 15614)

Responsible welding coordinator: Kismet BOZUGLU, 13.01.1983 / IWE (Name)

Deputy with equal rights: Ramazan KAYKAÇ, 26.08.1976 / Seyhan C

Certificate No.: CAS-17-IS-0315-TAT-0072

Valid: from 19.06.2017 to 18.07.2020

Issued on: 08.07.2019

Auditor: Mustafa İğneci KIZILOĞLU

General Regulations (see annex)

TÜV AUSTRIA TÜRK

T.C. TÜRK PATENT ve MARKA KURUMU

MARKA YENİLEME BELGESİ
Marka No : 2011 11530 - Ticaret

kaykaç

Marka Sahibi : KAYKAÇ MAKİNA KİMYA İNŞAAT TARIMSAL SULAMA SİSTEMLERİ AMBALAJ MALZEMELERİ TAARHİT SANAYİ VE TİCARİET LİMİTED ŞİRKETİ TÜRKİYE CUMHURİYETİ Çankaya Mahallesi 54 Sokak No:8A Yeşiloba Adana

Emtiası : 07 İlişiktir.

İşbu Marka ilk defa 14/02/2011 tarihinde tescil edilmiş olup, 14/02/2021 tarihinden itibaren ON YIL süreyle yenilenmiştir.

Prof. Dr. Halil ASAN
Türk Patenti ve Markası Kurumu Başkanı

TURK PATENT

ROYALCERT

CERTIFICATE

RoyalCert, certifies that the management system of the organization has been assessed and found to be in accordance with the requirements of the related standard

OHSAS 18001:2007

KAYKAÇ MAKİNA VE KİMYA İNŞAAT TARIMSAL SULAMA SİSTEMLERİ AMBALAJ MALZEMELERİ TAARH. SAN.VE TİC.LTD.ŞTİ
Yeşiloba Mah. Ortadoğulski San. Sit.46067 Sok. No:19 Seyhan / ADANA TÜRKİYE

Scope: Machining, Steel construction, Railway Vehicle Transportation, Unloading, Slewing Units, Railcar and Locomotive Spare Parts Manufacturing and Sales Services

Certification No : 13/KAY18A

Initial Certification Date : 03.01.2018

Issue Date : 03.01.2018

Expiration Date : 02.01.2019

Revision Date - No : 03.01.2018 - 00

Head of Certification: [Signature]

ROYALCERT



VAGON YEDEK PARÇA ÜRETİMİNDE UZMAN
THE EXPERT WAGON SPARE PARTS MANUFACTURER



+90 322 429 15 00 +90 322 429 16 00 www.kaykacmakine.com.tr

mail@kaykacmakine.com.tr /kaykacmakine /kaykacmakine.com.tr /company/kaykacmachinery

Yeşiloba Mah. Orta ölçekli Sanayi Sitesi 46067 Sokak No: 19, 01100 Seyhan / ADANA, TURKIYE